

Global Spatial Data Infrastructure Latin America and the Caribbean Newsletter

SDI-LAC

June 2010

Vol. 7, No. 6

Spatial Data Infrastructure-Latin America and the Caribbean (SDI-LAC) is a regional, monthly, and free, electronic newsletter from the [Global Spatial Data Infrastructure Association](#) (GSDI). It focuses on aspects related with Spatial Data Infrastructure, and on GIS, remote sensing, and data management issues, related with SDI in Latin America and the Caribbean. It aims to raise awareness, provide useful information to strengthen national SDI initiatives, and support synchronization of regional efforts.



[GSDI Definition](#)

The [Pan-American Institute of Geography and History](#) (PAIGH), member organization of GSDI, and the [Permanent Committee on Geospatial Data Infrastructure for the Americas](#) (PC-IDEA), promote SDI development in the region. The newsletter is prepared by PAIGH for GSDI.

[Message from the Editor](#)

[Input to this Issue](#)

[SDI News, Links, Papers, Presentations](#)

[Articles and Publications of the Month](#)

[Geospatial Research and Applications](#)

[GIS Tools, Software, Data](#)

[Training Opportunities](#)

[Funding Opportunities, Awards, Support](#)

[Employment Opportunities](#)

[Other](#)

[Americas: Conferences, SDI Events](#)



Message from the Editor

Due to an increasing volume of information on events, the respective section will be restricted to those events taking place in the Americas. However, for "The Rest of the World: Conferences, SDI Events", please find a link to upcoming events of global or major international interest in GSDI webpage at: <http://www.gsdi.org/events/upcnf.asp>

We kindly inform that SDI-LAC Newsletter is taking correspondent members in each country of the LAC region. Next issues will include their contributions. If you would like to become a correspondent for your country please contact Nancy Aguirre cnaguirre@ipgh.org. In principle the only requirement is that you are an active member in the Spatial Data Infrastructure activities of your country.

If you have news or information related to GIS, remote sensing, and Spatial Data Infrastructure that you would like to highlight (e.g., projects, conferences, workshop announcements, publications, reports, websites of interest, etc.), kindly send them in. We would be happy to include them in the newsletter.

We also encourage you to send to the editor your comments and suggestions for the continuous improvement of SDI-LAC Newsletter. **PLEASE share this newsletter with colleagues who may find the information useful, and ideally they will subscribe themselves.**

Back issues of the newsletter are at the GSDI website: <http://www.gsdi.org/newsletters.asp>
Editor, Nancy Aguirre, Pan-American Institute of Geography and History (PAIGH), <http://www.ipgh.org>, cnaguirre@ipgh.org

SDI-LAC Newsletter



Vol. 7, No.6

Global Spatial Data Infrastructure Latin America and the Caribbean Newsletter

Input to this Issue

Thanks for their contributions to this SDI-LAC Newsletter issue to:

Sergio Acosta y Lara	Department of Geographic Information, Direction of National Surveys, MTOP, SDI Subgroup member, Uruguay
Suchith Anand	Centre for Geospatial Science, University of Nottingham, UK
Santiago Borrero	Secretary General, Pan-American Institute of Geography and History, PAIGH, Mexico
Arturo Brun-Martínez	Architect, Bogota, Colombia
June Cools	External Relations Remote Sensing, VITO NV, Belgium
Enrique Muñoz	Deputy Director, SIG-Conabio, Mexico
Arturo Restrepo-Aristizabal	Coordinator Inter-American Biodiversity Information Network, Colombia
Eric van Prag	GeoSUR Regional Programa Coordinador, Venezuela
Kenneth Young	Chair and Professor, Department of Geography and the environment, University of Texas at Austin, USA

[\(Back to Top\)](#)

SDI News, Links, Papers, Presentations



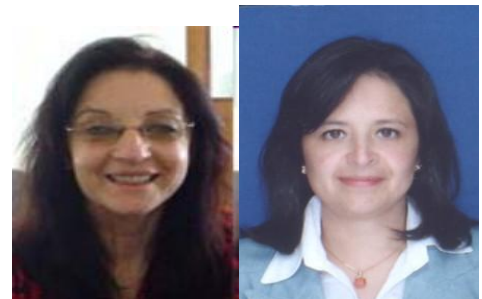
International Geospatial Society



IGS Election Results

Source: Santiago Borrero

Concluding the initial election period for the [International Geospatial Society](#) (IGS), members of the Association have elected Mabel Alvarez of Argentina as First President, and Lilia Patricia Arias of Colombia as Vice President and thus President Elect of the Society, for the 2010-2012 period. Upon these decisions, first two periods which are between 2010 and 2014 will be chaired by two Latin American women who are active and committed to Spatial Data Infrastructures. This is a great responsibility, and we send our best wishes for their successful conduction of the Society's affairs for the benefit of the IGS and related specialists.



Mabel Álvarez (left) and Lilia Patricia Arias (right)



Launch of First South American Geographic Data Portal

Source: Eric van Prag by way of Santiago Borrero

- Provides free access to geographic data published by institutions in South America.
- Allows for advanced geographic analysis using most detailed relief map available for the region.

In order to contribute to a better understanding of South America and to support development planning activities that require the use of geographic information, GeoSUR Program published this month on the Internet several innovative

SDI-LAC Newsletter

2



Vol. 7, No.6

Global Spatial Data Infrastructure Latin America and the Caribbean Newsletter

geographic services, first of their kind in the region. The program is led by the Andean Development Bank (CAF) and the Pan-American Institute of Geography and History (PAIGH), with technical support from the U.S. Geological Survey (USGS) EROS Center (Earth Resources Observation and Science Center).

The first service, a regional geographic portal, offers access to national maps posted on the Internet by more than thirty institutions in South America. Each of these institutions has implemented an interactive mapping service, a mechanism to provide access to their maps and other geographic data on the Internet. This is the first geographic portal that offers access to geographical data from institutions throughout South America.

The second service, a Topographic Processing Service (TPS), allows producing value-added maps and performing geographic analysis derived from the highest resolution relief map (or digital elevation model) available for South America. The TPS helps create supranational seamless maps on slope, aspect, shaded relief and drainage basins, among others; and to produce altitude profiles and visibility analysis for any selected point or area of South America. Data derived from the analysis are automatically generated on the Internet and are freely accessible. This is the first regional service that provides data derived from the 30 meter SRTM elevation model which is implemented in the world.

The third application developed by GeoSUR is an interactive map of South America that offers access to a wide range of spatial information, such as regional road maps, relief, settlements, hydrography, protected areas and ecosystems, as well as satellite imagery and infrastructure project information. The three above applications have been developed with technical support from the EROS Center.

"Geographic information is key to development planning," said Antonio Juan Sosa, Vice President of Infrastructure of the CAF, "and may help to significantly improve investment decision-making processes in the region. GeoSUR develops user-friendly tools based on advanced technology to place relevant geographic information in the hands of professionals and decision-makers from South America."

Published services of GeoSUR and participating regional institutions to this program are open access, require no special software or skills for their use, and may be utilized through the Regional Portal at: <http://www.geosur.info>.

GeoSUR Program is comprised of more than 30 geographic information producer institutions in South America and Panama. Among them are highlighted the Geographic Institute Agustin Codazzi of Colombia (IGAC), the Military Geographic Institute of Chile, the Military Geographic Institute of Ecuador and the Brazilian Institute of Geography and Statistics (IBGE), for their technical assistance role to regional counterparts participating in the program. For more information please contact the CAF geosur@caf.com.

The CAF is a multilateral financial institution whose mission is to support sustainable development and regional integration of its shareholder countries. To date, it is comprised of [17 countries in Latin America](#), the Caribbean and Europe. Its shareholders are Argentina, Bolivia, Brazil, Costa Rica, Colombia, Chile, Ecuador, Spain, Jamaica, Mexico, Panama, Paraguay, Peru, Dominican Republic, Trinidad & Tobago, Uruguay and Venezuela, as well as 15 private banks in the Andean region. [Based in Caracas, Venezuela, CAF has representative offices in La Paz, Brasilia, Bogota, Quito, Madrid and Lima.](#) *Disclaimer: The original is in Spanish; the English version is a free translation by the editor.*

[CATHALAC, NASA and USAID host Regional Symposium](#)

Fuente: <http://www.servir.net/>



The Regional Symposium on Geospatial Technology Applications in CAFTA-DR countries was held on May 6-7, 2010, in Panama City, Panama. The event was organized in the framework of a project entitled "Expansion of SERVIR in CAFTA-DR countries for Improved Environmental Monitoring and Informed Decision Making," which is implemented by the Water Center for the Humid Tropics of Latin America and the Caribbean (CATHALAC) jointly with the National Aeronautics and Space Administration (NASA) with financing from the United State Agency for International Development (USAID). More than 50 delegates met in the

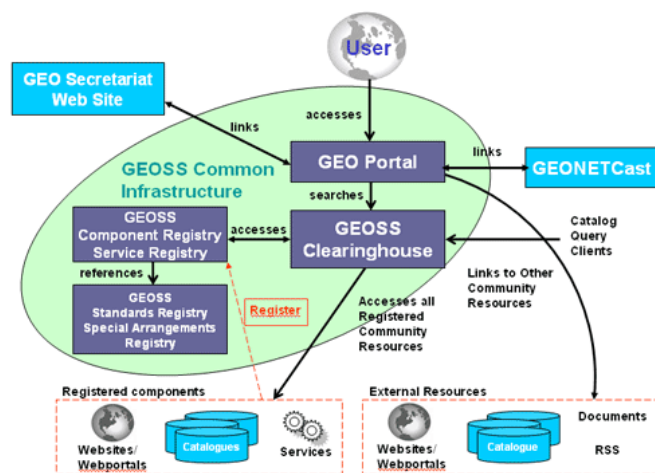
Global Spatial Data Infrastructure Latin America and the Caribbean Newsletter

Symposium to present diverse products developed through different pilot projects implemented in their respective countries of origin. In this context, the participants shared experiences in the use of geospatial technology applications for environmental monitoring, integrating geographic information systems in the tourism sector, forest fire monitoring, institutional strengthening in generating and updating environmental information, and monitoring coastal contamination. Representatives of national and regional institutions such as Environmental Ministries, Tourism Ministries, Meteorological Institutes, Forestry Institutes, Protected Areas Councils, Universities and regional environmental programs, were present to learn about the new developments. The agenda included presentations by the project implementers as well as a Fair in which participants could interact with the systems and platforms developed. In the case of Guatemala, a “Geospatial Information System for Fire Management” was presented, which featured a Fire Atlas of Guatemala, a Pattern Analysis and Ignition Cause Model, and a Dynamic Fire Risk Evaluation System. The pilot project carried out in El Salvador created an online information system that provides notices for harmful algal blooms (HABs) in three coastal conservation sites where red tide causing species of algae are currently monitored. In the case of Nicaragua, an online Tourism Information Platform was elaborated, which includes data on risk and other geospatial datasets provided through SERVIR. This system will form part of the larger Regional System that was developed jointly with the Central American Tourism Integration Secretariat (SITCA), which consists of an Interactive Map System that facilitates the promotion of Central America as a tourist “multi-destination.” More detailed information about these and other pilot projects, as well as the Symposium, can be found at the following website: http://www.servir.net/simposio_cafta-dr_2010. For more information, contact Africa Flores, CATHALAC Research Scientist, by e-mail: africa.flores@cathalac.org This e-mail address is being protected from spam bots, you need JavaScript enabled to view it.

The GCI Co-evolves with Community Portals

Source: GEO News (Issue #8, 28 April 2010)

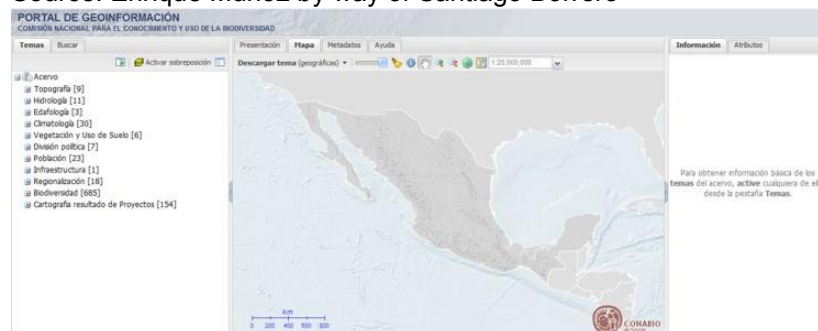
The Group on Earth Observations (GEO) is establishing the Global Earth Observation System of Systems (GEOSS) Common Infrastructure (GCI) to ensure that the systems contributed voluntarily by governments and organizations to GEOSS become truly interoperable. The GCI will provide a sustained internet entry point to GEOSS data and resources based on a consistent and agreed set of technical standards, registries, and metadata. This consistency is what makes it possible to combine data from diverse sources. The GEOSS-wide GCI is being developed at the same time as a growing number of focused “community portals”. These portals are emerging to meet the particular needs of individual communities and to develop solutions specific to these specialized communities. Community portals are as varied as the communities they serve in terms of the types and scope of the information they contain, as well as their complexity, maturity, interactivity, architecture, interoperability and degree of integration with the rest of GEOSS. By aligning themselves with the consistent standards and registries developed for the GCI, these portals are able to draw on and benefit from all GEOSS information resources. At the same time, the GCI benefits from being able to direct users to the depth of information and the unique tools that these portals offer. Some community portals are already directly accessing the GCI, while others are aligning themselves with the GCI but have not yet made operational links. Continued progress on developing the GCI as well as the many community portals is critically important to the future success of GEOSS. Fortunately, the interaction between the GCI and the community portals is a win-win process that provides benefits all around. This ongoing co-evolution promises to strengthen the full and open access to Earth observations as GEOSS develops over the coming years.



Global Spatial Data Infrastructure Latin America and the Caribbean Newsletter

SEMARNAT-CONABIO Online Mapping Geo portal, Mexico

Source: Enrique Muñoz by way of Santiago Borrero



National Commission for Biodiversity Knowledge and Use (in Spanish CONABIO): New Mexican Biodiversity Portal. CONABIO has developed a new portal aimed at providing a public information and knowledge venue accessible to all society. This site presents an attractive and accessible way to know Mexico's biodiversity and capital natural concepts. The main page contains the biological hierarchy of biodiversity components such as: genes, species, and ecosystems, and the spatial hierarchy where biodiversity operates, is known and used, such as: corridor, region, country, and planet. CONABIO Geo portal may be found at <http://www.conabio.gob.mx/informacion/gis/>

[First Uruguayan Congress on Spatial Data Infrastructure: Contributing to Development of a Regional Network](#)

Source: Sergio Acosta y Lara



The Working Group on Spatial Data Infrastructure (in Spanish GTIDE) of the e-Government and Information Society Agency (in Spanish AGESIC) calls for the 1st Uruguayan Congress on Spatial Data Infrastructure (SDI): Contributing to Development of a Regional Network, which will take place on October 25-26, 2010 in the city of Montevideo, Uruguay. This 1st Congress will be a space for dissemination of SDI topics in the region, and for exchanging experiences and knowledge. The goal is to cover an overview of SDI developments in Uruguay and the region, and to strengthen synergies and develop a common working agenda for the future.

Call for Abstracts: Those interested on participating in the Congress may do so through oral presentations and posters. Please send a one page abstract, A4 size .doc. or .odt format, via email to congresoide@agesic.gub.uy. Abstracts will be accepted until **June 15, 2010**. Acceptance of works will be notified on July 15, 2010. Deadline for final submission of full papers is August 30, 2010. Full papers should clearly state objectives, methodology and conclusions. These should have the same format as abstracts and not exceed 10 pages (including bibliography and interspersed graphics of 300dpi resolution), and sent as a pdf file. Posters should be printed using A0 size and portrait orientation. Congress languages: Spanish, Portuguese and English. We are pleased to invite all stakeholders to participate in this activity; you may find more information at the Congress website: <http://www.agesic.gub.uy/innovaportal/v/969/1/agesic/1er-Congreso-uruguayo-de-Infraestructura-de-Datos-Espaciales.html> or at AGESIC, Andes 1365, Piso 7, Tel: (+598 2) 901 2929, (11,100) Montevideo, Uruguay www.agesic.gub.uy

[V Working Days on Spatial Data Infrastructure of the Argentinean Republic](#)

Source: <http://www.sitsantacruz.gob.ar/>

The Government of the Province of Santa Fe, through the IDESF (Spatial Data Infrastructure of Santa Fe), organizes the V Working Days on Spatial Data Infrastructure in Argentina (V IDERA) to be held in the city of Santa Fe de la Veracruz, on August 5-6. The event is directed to participants from government agencies and public institutions interested on SDI implementation in Argentina. The aim is to provide a meeting place for sharing and discussion of initiatives, projects and ideas for the development of national SDI in Argentina, and formulation of its institutional organization. It will cover topics relating to: the National SDI, SDI initiatives at various governmental and other organizational levels, the core technology for its implementation, the necessary standards for integration and interoperability, and ways of dissemination and socialization of knowledge and experiences. Presentations will refer to

Global Spatial Data Infrastructure Latin America and the Caribbean Newsletter

SDI initiatives of any kind, covering technological, organizational and strategic issues, SDI progress and planning, achieved results and expected benefits. For purposes of the Working Days planning, it is requested an advance of each work to be presented with information about: Organization or institution, title, brief summary, and responsible person. This information should be sent by e-mail by **July 1, 2010**. For papers and more information please contact: videra@santafe.gov.ar

[IV Regional Working Days on Geographic Information and Territorial Ordering \(Rio Gallegos, Argentina\)](http://www.sitsantacruz.gob.ar/)

Source: <http://www.sitsantacruz.gob.ar/>



The Territorial Information System Project of Santa Cruz, under the Assistant Secretary of Planning of the Province, together with the Agricultural Experiment Station, Santa Cruz (National Institute of Agricultural Technology) calls for the Fourth Regional Working Days on Geographic Information and Territorial Ordering (IV JIGOT), to be held on September 1-3, 2010, in Rio Gallegos (Santa Cruz). The working days are directed to government organizations that develop, store, process, analyze and disseminate spatial information or make decisions about this type of information, to provincial and municipal land administration offices; to Ministries, Departments, Secretariats or other similar institutions operating with these technologies; universities and units under the Region; intelligence and security services; but also to organizations from the public and private sectors, professionals and individuals dedicated to geospatial information processing. In sum, this event is directed to those interested on expanding their knowledge on spatial information and it's relevance on decision-making, territorial and land use planning. This event will be a venue for exchanging experiences, presenting developments, discussions and results, sharing developments and drawbacks on its treatment, and on application of tools (through Geographic Information Systems, Digital Image Processing, Global Positioning Systems and other related technologies).

[Workshop on Spatial Data Infrastructure \(IDE 2010\) Successfully Completed, Ecuador](http://www.geoportaligm.gov.ec)

Source: <http://www.geoportaligm.gov.ec>



A Workshop on Spatial Data Infrastructure (IDE 2010), which aimed at preparing professionals responsible for geographic information production at various institutions of Ecuador for implementing a Spatial Data Infrastructure (SDI) at the institutional level, was successfully completed. IDE 2010 took place from April 13 to 16 with participation of 32 professionals from over 10 institutions around the country, including: SENPLADES, Pichincha Provincial Council, Municipality of Esmeraldas, Universities of Quevedo and Cuenca, MAGAP, SIGTIERRAS, Ministry of Health, Ministry of Environment, Ministry of Industry and Productivity, National Electoral Council, Superintendence of Telecommunications, and the National Institute for Drainage Systems, among others. The Military Geographic Institute of Ecuador (in Spanish IGM) is grateful for the assistance of all professionals to IDE 2010 Workshop, and expects that the acquired knowledge will be put into practice in their respective institutions for fostering the construction of the Ecuadorian Geospatial Data Infrastructure (in Spanish IEDG) in the near future.

[Cartography at Scale of 1:50,000 Released to Public Sector, Ecuador](http://www.geoportaligm.gov.ec)

Source: <http://www.geoportaligm.gov.ec>

Resolution Number IGM-e-2010-002 of March 29, 2010, resolves: "Art.1. To authorize, for once, the free release of digital cartography at scale of 1:50,000 produced by the Military Geographic Institute of Ecuador (in Spanish IGM) to

Global Spatial Data Infrastructure Latin America and the Caribbean Newsletter

the public sector, which will be used exclusively for institutional goals. Consequently, cartography on territorial jurisdictions will be released to regional governments." Interested parties of the public sector may now follow the respective [process](#) for the delivery of topographic maps at scale of 1:50,000.

[Diagnosis of Geographic Information Supply and Demand, Colombia](#)

Source: <http://www.icde.org.co/>

With the objective of designing and implementing an information management strategy to identify and develop solutions aimed at meeting the common needs of Geographic Information (GI) of the entities that make up the Colombian Spatial Data Infrastructure (in Spanish ICDE), the Geographic Institute "Agustin Codazzi" of Colombia (in Spanish IGAC) as coordinator of this initiative, is conducting a diagnostic analysis of supply and demand of GI nationwide. This activity is oriented towards observation of the GI market, i.e. the environment for which there

is a population of GI producers and users, for generating and sharing heterogeneous products. It also will identify user preferences to certain types of GI. The development of this activity will be achieved through the commitment and active participation of entities comprising the ICDE, for which it was produced and sent a preliminary diagnosis of supply and demand that is expected to gather this analysis. During April and May the IGAC has invited different organizations to participate in the development of the National Diagnostic Inventory of Geographic Information in the context of Strategy 3 of CONPES 3585 document: "To Strengthen the production of Geographic Information." To this end, it has requested information related to geographic metadata production at each of these entities, identifying the total metadata generated to date by product type, tools used for its collection, and the documentation standard, in order to highlight the work on implementing geographic standards of the various ICDE member institutions, and of those that are not yet part of this initiative.



Formal establishment of Brazilian gvSIG Community

Source: gvSIG Communication

On April 21 it was formally established the Brazilian gvSIG Community, aimed at spreading the use of gvSIG in Brazil, promoting exchange of experiences, supporting the project, and enhancing the proposed business model. First tasks being addressed are related to gvSIG development, testing collaboration, and documentation and interface translation into Portuguese (Brazil). A number of strategic steps have been identified in order to organize this Community:



- Identification of Brazilian users.
- First Brazilian gvSIG Conference. We are working on organizing the first gvSIG event in Brazil in 2010, aimed at learning about experiences of institutions, universities and enterprises on the use of gvSIG. Besides, these days have a preparatory character facing the 3rd Latin American and Caribbean gvSIG Conference to be held in 2011 in Brazil.
- Interaction with the OSGeo community. The coordinating group of the Brazilian gvSIG Community comprises the following institutions: Embrapa Florestas (Maria Augusta Doetzer Rosot and Marilice Cordeiro Garrastazu); International Hydroinformatics Center (Rafael González); Geographic Information System of Rio Ribeira and Iguape Basin (Gilberto UCLG), and Universidade Federal do Paraná (Prof. Charles Nelson Rosot). Brazilian Community URL: http://www.gvsig.org/web/community/comm_groups/comm_gvsig_br/

The OGC Seeks Participants for Surface Water Interoperability Experiment

Source: OGC Press Announcement

The Open Geospatial Consortium (OGC) will launch a Hydrology Surface Water Interoperability Experiment (IE) on 15 June, 2010. The OGC is requesting participation by organizations that are interested in sharing surface water data. The Surface Water IE will advance the development of Water ML 2.0 and test its use with various OGC service standards.

Global Spatial Data Infrastructure Latin America and the Caribbean Newsletter

The IE will also contribute to the development of a hydrology domain feature model and vocabularies, which are essential for interoperability within the hydrology domain. The experiment will develop and test Water ML 2.0 to insure that three typical hydrological use case scenarios are supported: Surface water data exchange across national and organizational jurisdictions; Surface water flow data discovery for forecast modeling; and Quantifying the flow of surface water to coastal systems. The IE will also test implementations of OGC services and clients that are required to support these objectives. The results of the IE will be documented in OGC engineering reports and change requests to existing OGC standards. A summary of the activity plan, requirements for participation, schedule, and kick-off meeting details are available at <http://www.opengeospatial.org/projects/initiatives/swie>. Expressions of interest in participating are due by **12 June, 2010**. Contact David Arctur (darctur@opengeospatial.org) for further details or to register as a participant.

[Venezuelan Proposal to Integrate International Network for Public Software was Accepted](http://www.cnti.gob.ve/)

Source: <http://www.cnti.gob.ve/>



Venezuelan proposal for establishing a collaborative network for sustainable development of Public Software in Latin America and the Caribbean, which produces an environment conducive to the supply and demand of IT solutions, was adopted together with those of Chile, Cuba and Peru. Venezuela submitted its proposal to the Collaborative Network of Free and Open Software for Latin America and the Caribbean (RCSLA) with the aim of structuring the first International Public Software Portal (SPI) and encouraging the development of free software from the State. RCSLA and the United Nations Programme (UNDP, Brazil) work to create the first International Public Software Portal from initiatives such as the Brazilian Public Software (www.softwarepublico.gov.br). This initiative was developed to facilitate implementation of new tools in various state administrative sectors, to promote integration between federal units, and to provide a public service to society based on informatics' products. The Brazilian project seeks to formalize new Latin American and Caribbean participations in order to ensure the sustainability of an International Network of Public Software. The RCSLA and Brazilian Public Software Foundation launched the first phase including the review and adoption of five proposals submitted by Cuba, Chile, Peru, Costa Rica and Venezuela, being admitted four of them.

[Ministry of National Property's Presentation on Geospatial Information, Chile](http://www.snit.cl/)

Source: <http://www.snit.cl/>



The Sixth Regional Conference of Municipalities took place on May 13 in the Region of O'Higgins, Chile, where the Executive Secretariat of the National Land Information System (in Spanish SNIT), under the Ministry of National Property, was invited to talk about the importance of geospatial information and this system's contribution to reconstruction. The presentation highlighted some services delivered by the SNIT such as the Geportal -a tool that provides complementary services to those offered by the National Territorial Information Catalog-, and the Geonode -a tool that allows institutions publishing geospatial information on a proprietary Website through Internet. The latter was of interest to some authorities as stated by Virginia Troncoso, mayor of San Vicente de Tagua, whose community was strongly affected by the earthquake occurred in February. Communal authorities stressed the need for installing a Geonode in their municipalities, as well as conducting training on the part of the SNIT for the operation of this tool as has happened in the regions of Atacama and Los Rios, which have an online territorial information publishing platform.

Global Spatial Data Infrastructure Latin America and the Caribbean Newsletter

OSGIS 2010 Schedule

Source: Suchith Anand

We are pleased to announce the agenda for the Second Open Source GIS UK Conference (OSGIS 2010) on 22nd June 2010 at the University of Nottingham, England, at <http://cgs.nottingham.ac.uk/~osgis10/OSGIS2010Agenda.pdf>. Please visit http://cgs.nottingham.ac.uk/~osgis10/os_home.html for the latest conference news and schedule. The OSGIS 2010 Workshops will take place on 21st June 2010. Please contact Suchith Anand (suchith.anand@nottingham.ac.uk) for any information needed.

[\(Back to Top\)](#)

Articles and Publications of the Month

IABIN MIND Newsletter Launched

Source: Arturo Restrepo-Aristizabal by way of Santiago Borrero

We are pleased to introduce the IABIN MIND Newsletter Issue 1 for May 2010. Gladys Cotter, IABIN Chair, introduces "the first release of IABIN_MIND Milestones on Interoperability Newsletter and Dashboard. This planned quarterly newsletter aims to document IABIN interoperability and IT advancements, best practices, and lessons learned on biodiversity informatics about data and metadata content requirements, web-based toolkits for decision support models, access considerations, syntax and semantic specifications. We have solicited key contributions from experts, such as: Arturo Restrepo-Aristizabal, Michael Browne (GISIN), Steve Schill (TNC); the CIAT Team led by Andy Jarvis in Colombia, and Denny Grossman (DataBasin). We hope to continue working with such contributors in the future, and providing a venue for all IABIN participants to share their work and scholarship." IABIN Newsletter is posted at http://www.iabin.net/Outreach/-/Publicaciones/View-category.html?ascdesc=DESC&orderby=dmdate_published.



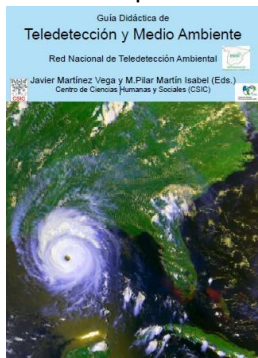
Video on SDI projects in Uruguay

Source: Sergio Acosta y Lara

Presentation of the Joint C-Project "Development of Instruments for Environmental Monitoring and Planning" in the context of the Spatial Data Infrastructure (SDI) of Uruguay is now available at http://www.youtube.com/user/AGESIC#p/c/u-all/0/Y_y_XMw5rr4 (Spanish only).

Free Download of Remote Sensing and the Environment Tutorial

Source: <http://snitchile.blogspot.com/>



The [Spanish Association of Remote Sensing](#) authorized free download of the [Remote Sensing and the Environment Tutorial](#), edited by Javier Martínez Vega and M. Pilar Martín Isabel. The tutorial aims to be a useful tool for teachers on subjects related to Earth Sciences. That is why this guide contains a selection of images illustrating relevant environmental processes and facts that concern society and landforms that are clearly visible and identifiable from space, together with other images that are aesthetically attractive. Similarly, image selection from various Earth observation instruments and platforms was intended for teachers and readers to have a wide repertoire of images with diverse features and resolutions. These images go together with texts facilitating its understanding. The authors seek to draw attention on most attractive features in each image, and in some cases, suggest additional teaching activities. In addition to this educational function, this guide aims to raise awareness on natural disasters that occur each year and anthropogenic environmental impacts that are affecting the planet.

Global Spatial Data Infrastructure Latin America and the Caribbean Newsletter

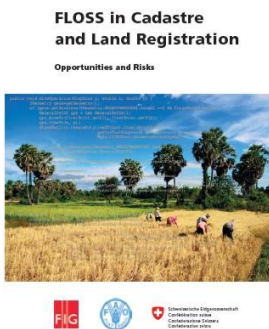
[Chilean Earthquake and Geodetic Implications to Argentina](#)

Source: <http://www.geoinstitutos.com/>

Scientific data processing from geodetic GPS receivers installed in South America and Argentina as part of RAMSAC (Argentinean Network for Continuous Satellite Monitoring www.ign.gob.ar/ramsac/introduccion), allow determining position changes of permanent GPS stations with millimetrical accuracy. This makes it possible to determine precise coordinates and the position change in time for each station. Variation of coordinates of a given point in time is calculated through vectors representing displacement within a year. This shift depicts the plate displacement and deformation, which are movements identified by plate tectonics theory. For obtaining these results, the National Geographic Institute (in Spanish IGN) processed daily data from RAMSAC permanent GPS stations, from networks of all countries in South America, and from the International Geodetic Service (IGS). This processing is also carried out under the SIRGAS project (Geocentric Reference System for the Americas www.sirgas.org). In relation to the National Geodetic Reference Framework (POSGAR 07) the earthquake has caused changes in the position of many of the points, which implies that coordinates have changed abruptly and that there is a need of making a thorough assessment of the movement, and to study and correct Network coordinates. In the course of this year, IGN will make observations to determine the actual points' shift and thus to make a more accurate assessment of POSGAR 07 changes. Upon continued data processing from permanent GPS stations, coordinate stability over time will be checked considering there are still some movements that produce position variations, and that there is a need of finding a balanced position. IGN will inform all users of any changes in POSGAR 07 Framework coordinates. Currently, necessary studies for assessing the situation produced by the earthquake are being performed [The full article may be found at http://www.geoinstitutos.com/notides.asp?id_noticia=292].

FAO and FIG Commission 7 WG 7.3 publication "FLOSS in Cadastre and Land Registration - Opportunities and Risks"

Source: <http://www.fig.net/commission7/>



The Food and Agriculture Organization of the United Nations (FAO) Land Tenure Group and International Federation of Surveyors (FIG) Commission 7 WG 7.3 have launched a publication "[FLOSS in Cadastre and Land Registration - Opportunities and Risks](#)". Land administration and cadastral systems in the 21st century depend on the use of Information Technology (IT) tools. The application of these tools affects very much the systems' efficiency and costs. While commercial software have helped to establish the infrastructures of today and continue to do so, open-source alternatives, which have achieved considerable significance in many IT fields, have grown to provide credible alternatives for consideration. For various reasons, however, they are not often used in land administration and cadastre, even when their potential is increasingly recognized. This booklet aims to shed light on this potential, exploring the advantages, and disadvantages of open source solutions within the context of cadastre and land registration. The publication is the result of four years of cooperation between FAO and FIG WG 7.3.

[\(Back to Top\)](#)

Geospatial Research and Applications

[Want to find your way fast? Follow a girl](#)

Source: Arturo Brun-Martínez

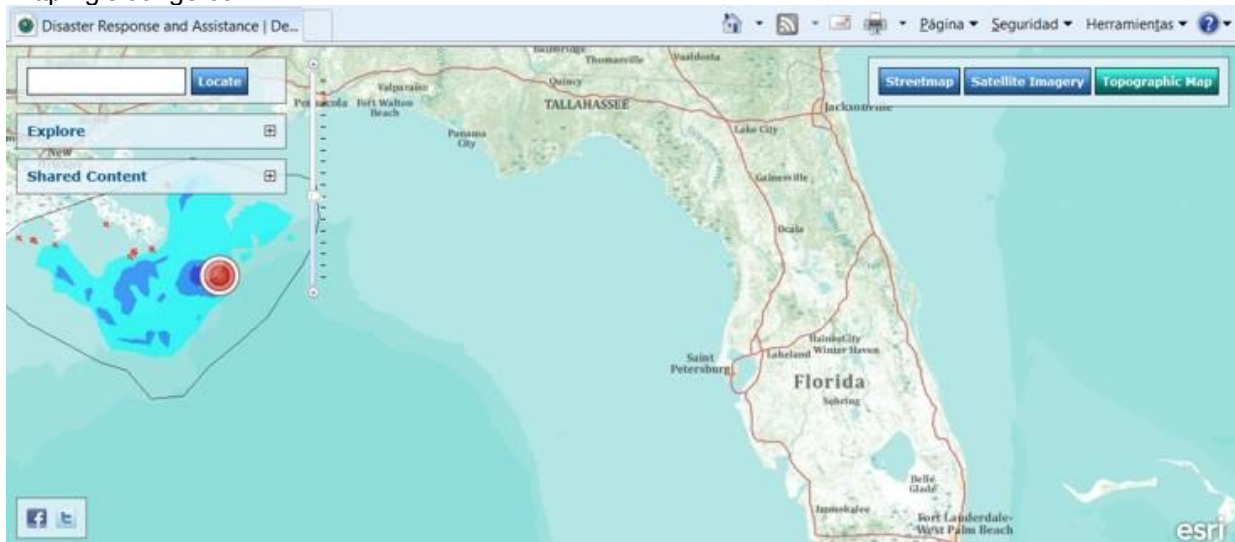
Men may be better map readers but women outstrip them at recalling routes. Women may not have discovered Australia or the Americas, but new research by scientists shows they can be better navigators than men if they have visited a place before. Women can get there quicker because they remember landmarks. It all goes back to the Pleistocene epoch —which began more than 2.5m years ago and ended almost 12,000 years ago— when our skills at route finding were honed differently for the distinct tasks of hunters and gatherers. The scientists used the population of a Mexican village to test their theory. The results of an experiment to see how much faster women could find

Global Spatial Data Infrastructure Latin America and the Caribbean Newsletter

mushrooms will be echoed in the fruit and vegetable sections of Tesco and Sainsbury today. Researchers fitted with GPS (Global Positioning System) navigation systems and heart-rate monitors followed villagers to see how many mushrooms they gathered and how long it took. The GPS system mapped all the routes taken, and the heart-rate monitors detailed the energy expended. The results, which are to be published in *Evolution and Human Behaviour*, the scientific journal, show that while there was no significant difference in the amount of mushrooms collected, there was a marked contrast in the effort expended. The men climbed higher, travelled further and used 70% more energy than the women, who made more stops but seemed to know where they were going. The scientists say the study reinforces the idea that male and female navigational skills have evolved differently over time. The male strategy is the most useful for hunting down prey—chasing an antelope on foot, for example, would mean running a long way over a winding route—and has led modern man to navigate by creating a mental map, then imagining their positions on it. Women, however, are more likely to recall their routes by using landmarks if they are retracing paths to the most productive patches of plants. Luis Pacheco-Cobos, who led the research at the National Autonomous University of Mexico in Mexico City, said: “These findings show that women perform better and more readily adopt search strategies appropriate to a gathering lifestyle than men.” A long-held hypothesis as to the different navigation abilities of men and women is attributed to the evolved roles of men as hunters and women as gathers dating back to the Pleistocene age.

[Gulf of Mexico Oil Spill Mapping](#)

Source: <http://gislounge.com/>



The explosion of the Deepwater Horizon rig and subsequent spewing of millions of gallons of oil in the Gulf of Mexico is creating an environmental disaster of epic proportions. There are many mapping resources out there helping to map out the extent of the spill and to predict its trajectory and impact in the area.

[Comparing the Gulf oil spill to other historic spills](#): The Google Earth Blog has a KML file created by GEB reader “David” that provides a lot of detail about the Gulf of Mexico oil spill and provides comparisons to 70 other historic oil spills.

[How big is the Deepwater Horizon oil spill?](#) Paul Rademacher, Google Maps Engineering Manager, created a page that uses the Google Earth plugin for browsers to allow visitors to compare the extent of the spill to any location they choose. Type in any city and the map will pan to the area and overlay a polygon of the current oil spill extent.

[ESA Oil Spill Monitoring](#): The European Space Agency (ESA) has been monitoring and releasing satellite imagery of the oil spill with Envisat, the largest Earth Observation spacecraft ever built.

[ESRI's Gulf of Mexico Oil Spill Map](#): ESRI is consolidating links, imagery, and videos on their Oil Spill Map. Users are invited to add current information to the map relating to the oil spill. ESRI outline their efforts to help with the disaster in this press release.

Global Spatial Data Infrastructure Latin America and the Caribbean Newsletter

[ROFFS Deepwater Horizon Rig oil spill monitoring](#): An ocean fishing forecasting service, ROFFS has a series of maps showing the extent of the spill and ocean currents on their site.

[Oil Spill Maps Roundups](#): Jonathan Crowe has compiled [an extensive list of oil spill related maps](#) and news articles. [Google Maps Mania](#) also has a list.

[A Rendez-vous with Free and Open Source Geomatics!](#)

Source: <http://rendez-vous-osgeo-qc.org/2010/programme/>

The Quebec Local Chapter of OSGeo is proud to announce the first edition of Rendez-vous OSGeo Québec which will take place in Saguenay, Quebec, on June 15-16, 2010. The date of the event also coincides with the second anniversary of the local chapter which was created following a meeting at the same location in June of 2008. A very dynamic community of over a hundred active members has built around the OSGeo Quebec Local Chapter since its creation 2 years ago and we feel that it is just the beginning. The final program is now available [here](#).

[\(Back to Top\)](#)

GIS Tools, Software, Data

Low Resolution Earth Observation MA10 Products Available Free of Charge

Source: June Cools



It is with great pleasure that we announce a new product in the world of low resolution Earth observation data, the Metop-AVHRR 10-daily composites (MA10). All information on the MA10 product can be found on the website (www.metops10.vito.be). The MA10 products are available free of charge for non-commercial use and can be ordered via the on-line catalogue. We thank all our partners, especially EUMETSAT, the MARS unit of JRC and the Belgian Science Policy, and hope that this new product will make a valuable contribution to your research.

New version of gvSIG NavTable to 1.9, developed by CartoLab

Source: gvSIG Communication

Is now available a new version of NavTable to gvSIG1.9 developed by CartoLab [1], with the following changes: The Table Layout was changed for MiG Layout library to improve performance of NavTable window when its size changes; NavTable layer editing system has been improved for further integration with gvSIG; Now all layers selected in the TOC may be opened at once; A NavTable configuration directory has been created inside gvSIG configuration directory; A new alias system compatible with the previous one was added, allowing to add aliases to Post GIS layers; There have been several changes for allowing NavTable compatibility with gvSIG-3D extension (contribution by Jordi Torres Fabra); Various bugs were fixed. As for translations, German has been added by Artur Juen, and Italian by Silvio Grosso and Antonio Falciano. This new NavTable 0.6 version may be downloaded through the Osor forge [2] with versions for Linux and Windows. More information about NavTable is available through the project's website [3]. Special thanks to the entire community for their contributions and bug reports that allow improving NavTable on a daily basis. [1]: <http://cartolab.udc.es> [2]: http://forge.osor.eu/frs/?group_id=122 [3]: <http://navtable.forge.osor.eu>

[Free Spreadsheet Geocoding](#)

Source: <http://gislounge.com/>

If you have a spreadsheet such as a Microsoft Excel file containing address or x, y coordinates and you want to make a quick map, [BatchGeo](#) is a free and easy online application that will convert your location data and [geocode](#) it onto [Google Maps](#). The steps are pretty simple. Since the application uses the first row as the column names, make sure your spreadsheet logically names your columns. It will



Global Spatial Data Infrastructure Latin America and the Caribbean Newsletter

make assigning the geocodeable columns easier if your addresses are in a column named "address", your city is in a column named "city", etc. Simply copy and paste the cells into the section called "Step 1: Source Data". Hit the validate button to make sure the columns are recognized properly. Under Step 2, you can verify that the geocoding application has properly recognized your columns for geocoding. You can also set the columns to be used for the title and descriptions for each marker. Click the "Run Geocoder" and once the records have been processed, the completed geocoded map will show on the same page. You then have the option of sharing the map with others or exporting a [KML file](#). The geocoded database with lat/long coordinates is also displayed which can then be copied and pasted in a spreadsheet or database. BatchGeo has a couple of other useful and free tools such as the reverse Geocoder which will take coordinates and assign addresses to them and the Address Map Coordinate which will return a lat/long coordinate for an address you enter.

[NGOs of the World Unite!](#)

Source: <http://caribbean-gis.blogspot.com/>



NGOs, put yourselves on the map. Have a look at this great idea by the National Geographic Society (NGS) - [Global Action Atlas](#). It's a website showing the locations and profiles of projects managed by nonprofits around the world in the areas of conservation, humanitarian affairs, cultural preservation, climate change, exploration, and energy. Frank Biasi of the NGS says that it's being built "to give the nonprofit community a rich platform to promote their work and attract supporters... I also think that because this facility is open and accessible to all, it will serve a useful purpose when one needs to reach able organizations in an emergency such as a natural disaster."

[\(Back to Top\)](#)

Training Opportunities

[Master GIS, ESRI Spain](#)

Source: <http://www.esri.es/>



The ESRI Master Program on Geographic Information Systems is designed to train in the profession, recent graduates or those who have already gained some experience in this field. It aims to develop knowledge and skills required to meet a successful career. The main objective of this program is, therefore, to train a group of specialists in Geographic Information Technology that could meet the current demand for professionals at many enterprises in the field. Different scholarships for this Master are offered. These grants will be awarded to the best nominations, according to criteria on academic record, language skills, work experience (if any) and a personal interview with the future student. Deadline for submission of applications to these grants is **June 30, 2010**.

[\(Back to Top\)](#)

Funding Opportunities, Awards, Support

[Committee for Research and Exploration Grant Application](#)

Source: <http://www.nationalgeographic.com/>

The National Geographic Society awards grants for scientific field research and exploration through its Committee for Research and Exploration (CRE). All proposed projects must have both a geographical dimension and relevance to other scientific fields and be of broad scientific interest. Applications are generally limited to the following disciplines: anthropology, archaeology, astronomy, biology, botany, geography, geology, oceanography, paleontology, and zoology. In addition the committee is emphasizing multidisciplinary projects that address environmental issues (e.g., loss of biodiversity and habitat, effects of human-population pressures). Funding is not restricted to United States

Global Spatial Data Infrastructure Latin America and the Caribbean Newsletter

citizens. Researchers planning work in foreign countries should include at least one local collaborator as part of their research teams.

Grants to PIs in Developing Countries: While the first priority of the CRE is to fund high-quality scientific research, there is also a particular interest in funding projects that promote the growth of scientific infrastructure in geographic locations where such infrastructure is lacking. This grant program does not pay educational tuition, nor does it offer scholarships or fellowships of any kind. Applicants are expected to have advanced degrees (Ph.D. or equivalent) and be associated with an educational organization or institution. Independent researchers or those pursuing a Ph.D.-level degree may apply, but awards to non-Ph.D. applicants are rare. As a general rule, all applicants are expected to have published a minimum of three articles in peer-reviewed scientific journals. While grant amounts vary greatly, most range from US\$15,000 to US\$20,000. Budget constraints keep the number to approximately 250 per year. Before receiving an application form, each project director must submit a pre-application form online. If you have any questions about the online pre-application form, please email cre@ngs.org. The Committee for Research and Exploration accepts pre-applications throughout the year. Please submit your pre-application at least ten months prior to anticipated project dates. Within eight weeks, the committee will send a decision to the project director. If the pre-application is approved, the committee will send the project director an email with a link to the full application online. [Fill out pre-application.](#)

Lincoln Institute of Land Policy - Research Fellowship Program for Master's and Doctoral Thesis

Source: Lincoln Institute of Land Policy Communication

The Program for Latin America and the Caribbean of Lincoln Institute of Land Policy announces the eighth annual cycle of funding scholarships to support master's and doctoral thesis being developed by students from universities located in Latin America.



The program will support graduate thesis on issues relevant to the debate on land policy in the areas of key interest to the Program for Latin America and the Caribbean of the Lincoln Institute. The specific subject areas that the Institute seeks to support this year are detailed in the Annex to document the call. Additionally, selected theses must be completed before and / or on July 31, 2011. The call, guidelines and application forms are found at the following link: [Latin America Program Graduate Student Fellowship Application Guidelines: 2010-2011](#). Candidates interested in applying should complete the application contained in the notice and send it to lacbecas@lincolninst.edu. Deadline for receipt of applications is up to **June 8**, 2010. The selection results will be announced in August 2010.

[\(Back to Top\)](#)

Employment Opportunities

Environmental Project Coordinator in Costa Rica & Ecuador

Source: Kenneth Young

The International Adoption of Conservation Technologies (IntACT) Project will hire one or two project coordinators to oversee the collection of data in Costa Rica and Ecuador. This is envisioned to be a temporary 10-12-month full-time position with the possibility of extension. The positions could begin as early as August 2010. Potential salary is within the range of approximately \$900-\$1200/month, but will be negotiated dependent on the skill level and qualifications of the individual. The positions will be based in Costa Rica and/or Ecuador. To apply for this position, please send a cover letter, CV, and list of three references to Dr. Lekelia "Kiki" Jenkins at kikij@uw.edu. Review of applications will begin on **June 6**, 2010 and will continue until the position(s) are filled. The IntACT Project will explore the key factors related to successful cross-cultural promotion of marine conservation technologies by investigating the case studies of the international promotion of Turtle Excluder Devices (TEDs) and circle hooks, which are both used to reduce by catch of sea turtles. The research will pursue the following research objectives: (1) To describe the types of technology promotion programs used by U.S. agencies and organizations to encourage the adoption of TEDs and circle hooks by fishers outside the U.S., (2) To determine which aspects of these promotional transfer efforts helped or hindered the promotion and adoption processes, (3) To describe the methods used by people well-known for their abilities to successfully promote adoption of conservation technologies cross-culturally. This project is support by the US National Science Foundation and will involve a team of researchers from the University of Washington, Inter-American Tropical Tuna Commission, the California Academy of Sciences, and Ecuadorean and Costa Rican institutions. This will be a

Global Spatial Data Infrastructure Latin America and the Caribbean Newsletter

dynamic and exciting opportunity for someone interested in collaborative social science research on environmental issues. One of the country coordinators will be responsible for overseeing the activities in Ecuador and the other will oversee activities in Costa Rica. The duties of the position include: Communicating and coordinating with the international research team; Hiring and managing field assistants; Collecting interview data; Constructing profiles of fishing communities that may serve as field sites; Translation of interview guides; Coordination of research trips; Supervising the collection and coding of data; Assuring data quality; Acting as a co-author of research reports. Qualified individuals will possess many of the following knowledge, characteristics, and skills: Verbal and written fluency in Spanish and English; Knowledgeable about fishing communities and fisheries management in Ecuador and/or Costa Rica; Be able to travel for extended periods of time (up to approximately 3 weeks); Have experience managing a team of people; Basic computer skills, including Microsoft Excel and Word; Well-respected and well-connected in the Ecuadorian and/or Costa Rican fishing, environmental protection, and academic communities; Experience with social science research preferred; Graduate degree in social science, environmental studies, marine science, or related fields preferred.

[\(Back to Top\)](#)

Other

[Brazil and Argentina develop satellite to monitor oceans](#)

Source: <http://www.inpe.br/>



The Brazilian Space Agency (in Portuguese AEB) and the National Commission for Space Activities (in Spanish CONAE) will jointly develop the Sabia-Mar satellite for global ocean observation and monitoring of the Atlantic near Brazil and Argentina. With Sabia-Mar it will be possible to observe the color of the oceans, to monitor oil exploration, manage coastal areas and contribute to fishery, among other applications. The joint initiative was approved at the last meeting of the Board of AEB, held on April 28. The National Institute for Space Research (in Portuguese INPE) will act as executing agency for the project. Sabia-Mar project is in line with the objectives set by the international scientific community and more specifically with those established by the Committee on Earth Observation Satellites (CEOS) to the constellation of satellites observing the oceans color. Funding for the initial phase of US\$2.5 million by Brazil, with an expected duration of nine months, was announced jointly at a meeting between deputy foreign ministers of both countries and the project managers, under the Brazil-Argentina Mechanism of Integration and Coordination (MICBA). The meeting took place on April 29, at the Itamaraty Palace, in Rio de Janeiro. On occasion, representatives from both countries said there are very good prospects of obtaining full funding for the satellite mission. According to the agreement established between AEB, INPE and CONAE, studies for the development of the Sabia-Mar will seek the optimization of its payload (camera imaging) aimed at complementing the existing and planned optical missions in Brazil and Argentina (Amazonia-1, CBERS-3 and 4, and SAC-D/Aquarius satellites). Considering the industrial and technological capabilities of both countries, alternatives for implementation and allocation of tasks which include both the payload on the platform will be proposed. Studies comprising Phase A of the mission will also take into account the option of jointly developing a new platform that fulfills the needs of the Sabia-Mar satellite and future missions between the two countries.

[\(Back to Top\)](#)

Global Spatial Data Infrastructure Latin America and the Caribbean Newsletter

Americas: Conferences, SDI Events

[Year 2010](#) January February March April May [June](#) [July](#) [August](#) [September](#) [October](#) [November](#) December

JUNE 2010		
1	Las Vegas NV, USA	Consumer Telematics Show
1-4	Ithaca NY, USA	36th Annual Conference of the International Association for Social Science Information Service and Technology (IASSIST)
1-4	Washington DC, USA	Global Earthquake Model (GEM) Outreach Meeting 2010
1-5	Regina SK, Canada	Canadian Association of Geographers National Meeting
3-4	Winnipeg MB, Canada	ESRI Regional User Conference
3-4	Kiana Lodge Poulsbo WA, USA	2010 Indigenous Mapping Network Conference
6 *NEW*	Chicoutimi, Canada	Meeting OSGeo-Québec 2010
7-9	Rosemont, IL, USA	Sensors Expo & Conference
8-9	Novi MI, USA	Telematics Detroit 2010
8-11	Washington DC, USA	COM.Geo 2010: 1st International Conference and Exhibition on Computing for Geospatial
9-10	Indianapolis IN, USA	Mapping Indiana Communities Workshop: Intro to GIS
10 *NEW*	Philadelphia PA, USA	The 2010 Mid Atlantic Chapter of URISA Spring Meeting
14-17	Nashville TN, USA	Intergraph 2010
14-18	Calgary, Alberta, Canada	Canadian Geomatics Conference 2010 and ISPRS Com I Symposium
14-18	Baltimore MD, USA	URISA Leadership Academy
14-18	Silver Spring MA, USA	OGC Technical and Planning Committee Meeting
15-18	Calgary, Alberta, Canada	Canadian Geomatics Conference (CGC) "Convergence in Geomatics - Shaping Canada's Competitive Landscape"
16	Dallas TX, USA	Mapping Texas Communities Workshop: Intro to GIS
16-18	Calgary, Alberta, Canada	Commission I Symposium "Image Data Acquisition - Sensors & Platforms" Contact: elsheimy@ucalgary.ca
20-24	Chicago IL, USA	129th Annual Conference and Exposition of the American Water Works Association: Show Me the Water
21-23	Quebec, Canada	Canadian Hydrographic Conference
21-23	Boston MA, USA	ENZEE Universe
21-25	Santo Domingo, Dominican Republic	International Meeting "Virtual Educa" – 2010
21-25	San Francisco CA, USA	2010 SEMANTIC
22 *NEW*	Portland OR, USA	Iron GIS Workshops
22-23 *UPDATED*	Chicago IL, USA	People Tracking and Location USA 2010
22-25	Calgary, Alberta, Canada	103rd Air and Waste Management Association Conference and Exhibition: Energy and the Environment
23	Columbus OH, USA	Mapping Ohio Communities Workshop: Intro to GIS
23-25	Las Vegas NV, USA	Nevada Geographic Information Society Annual Conference
23-27 *NEW*	Medellin, Colombia	Workshop on Applications of Global Navigation Satellite Systems
25	Cleveland OH, USA	Mapping Ohio Communities Workshop: Intro to GIS

Global Spatial Data Infrastructure Latin America and the Caribbean Newsletter

28-30	Quebec City, Canada	IC WG II/IV 7th International Symposium on Voronoi Diagrams in Science & Engineering (ISVD2010) E-mail: Mir-Abolfazl.Mostafavi@scg.ulaval.ca
Jun.28-Jul.2	Santa Fe, Argentina	Fifth Congress on Cartographic Science, Argentina E-mail: congresocienciacartograficasfe@gmail.com
29 *NEW*	Franklin WI, USA	Iron GIS Tech Event
Jun.29-Jul.2	Orlando FL, USA	2nd International Symposium on Optical Engineering and Photonic Technology: OEPT 2010
Jun.29-Jul.2	Orlando FL, USA	4th World Multi-Conference on Systemics, Cybernetics and Informatics: WMSCI 2010

JULY 2010

3-7	Edmonton Alberta, Canada	24th International Congress for Conservation Biology
8 *NEW*	São Paulo SP, Brazil	Quality of Geospatial Data: Learn how to obtain a precise geographic base quickly
8-10 *NEW*	Lima, Perú	8th International Exhibition GEOEXPO 2010
8-11	Monterrey CA, USA	2010 Society for Conservation GIS (SCGIS)
8-12	San Diego CA, USA	ESRI International User Conference
10-13	San Diego CA, USA	2010 ESRI Education User Conference , Survey & Engineering GIS Summit, Homeland Security GIS Summit
11-12	San Diego CA, USA	2010 ESRI Business GIS Summit
11-15	San Diego CA, USA	ESRI International User Conference
12-16	San Diego CA, USA	2010 ESRI International User Conference
12-16	Houston TX, USA	The Fifth International Conference on Environmental Science and Technology 2010
14-16 *UPDATED*	Caracas, Venezuela	2nd Latin America and the Caribbean qvSIG Working Days: "Uniting People Around the World"
15-16	San Diego CA, USA	MAPublisher Training
18-21	Denver CO, USA	10th International Conference on Precision Agriculture
23-27	San Diego CA, USA	ESRI User Conference
25-30	Honolulu, HI, USA	IGARSS'10: IEEE International Geoscience & Remote Sensing Symposium
26-30	Vancouver, B.C. Canada	GeoWeb 2010 Contact: info@geowebconference.org
26-30	Los Angeles CA, USA	SIGGRAPH 2010
27-30	Recife PE, Brazil	3rd Brazilian Symposium on Geodesic Sciences and Geoinformation Technologies - III SIMGEO
28-30	Baltimore MD, USA	Intelligent Spatial Decision Analysis ISDA '10 in conjunction with International Symposium on Intelligent Decision Technologies (IDT'10) Email: beniamino.murgante@unibas.it
28-30	Vancouver, Canada	GeoWeb 2010 - 3D City Modeling Academic Track E-mail: h.ledoux@tudelft.nl
28-30	Vancouver, Canada	IC WG IV/II GeoWeb 2010 - Sensor Web Academic Track E-mail: steve.liang@ucalgary.ca
Jul 29-Ago 2	Incline Village NV, USA	MAPPS 2010 Summer Conference

AUGUST 2010

2-6	Orange County CA, USA	Accela User Conference 2010
-----	-----------------------	---

Global Spatial Data Infrastructure Latin America and the Caribbean Newsletter

3-6	Buenos Aires, Argentina	Scientific Committee on Antarctic Research (SCAR) Open Science Conference (OSC)
3-6	Arequipa, Peru	Applied Geoinformatics for Society and Environment (AGSE)
3-7	Toledo OH, USA	Local Food Systems in Old Industrial Regions: Challenges and Opportunities (IGU Commission on the Dynamics of Economic Spaces)
4-6 *NEW*	Curitiba, Paraná, Brazil	ANPP 2010 - Policy and Planning Workshop
5-6 *NEW*	Santa Fe de la Veracruz, Argentina	V Working Days on Spatial Data Infrastructure of the Argentinean Republic (V IDERA)
8-11 *NEW*	Maringá PR, Brazil	7th Brazilian Symposium on Geotechnical and Geoenvironmental Mapping (7 SBCGG)
8-13	Foz do Iguassu, Brazil	American Geophysical Union (AGU) Joint Assembly
13-19	Foz do Iguassu, Brazil	Managing Waveform Data and Related Metadata for Seismic Networks
15-18	Boston MA, USA	2010 APWA International Public Works Congress & Exposition
16-18	Charlotte NC, USA	2010 URISA/NENA Addressing Conference
16-20	Fortaleza, Brazil	2nd International Conference on Climate, Sustainability and Development in Semi-arid Regions (ICID 2010)
23-25	Indianapolis IN, USA	FEMA - 4th Annual HAZUS Conference
26	The Woodlands TX, USA	GeoGathering 2010
26-29 *NEW*	Rio de Janeiro RJ, Brazil	International Seminar - Metropolis, Inequalities and Democratic Planning
Aug.29-Sep.1 *NEW*	São Carlos SP, Brazil	Ibero-American Symposium on City and Culture: New Urban Spatialities and Territorialities (SILACC 2010)
Aug.30-Sep.2 *NEW*	Las Vegas NV, USA	Intergraph 2010

SEPTEMBER 2010

1-3 *NEW*	Río Gallegos, Santa Cruz, Argentina	IV Regional Working days on Geographical Information and Land Management (IVJIGOT)
9-10	Philadelphia PA, USA	MAPublisher Training
12-14	Washington DC, EUA	IMTA (AMERICAS) Conference & Trade Show 2010
12-16	Vancouver BC, Canada	15th International Union of Air Pollution Prevention and Environmental Protection Association's World Clean Air Congress: Achieving Environmental Sustainability in a Resource Hungry World
12-16	Minneapolis MN, USA	National States Geographic Information Council (NSGIC) Annual Conference
14-17	Loveland CO, USA	GIS in the Rockies 2010
15-17	Columbus OH, USA	2010 Ohio GIS Conference
16-17	Edmonton AB, Canada	ESRI Regional User Conference
16-18	San José, Costa Rica	11th International Congress on Geomatics: Geodesy and Topography in Real Time
19-24	Montreal, Canada	IWA World Water Congress and Exhibition
22	Washington DC, USA	LI Geocloud 2010
22	Washington DC, USA	Location Intelligence 2010
22-24 *NEW*	Merida, Venezuela	1st Venezuelan National Congress on Geographic Information Systems GIS - CONAVESIG
23-24	Calgary, Alberta, Canada	GIS for Oil & Gas Conference and Exhibition
23-24	Daytona Beach FL, USA	4th Annual Central Florida GIS Workshop

Global Spatial Data Infrastructure Latin America and the Caribbean Newsletter

26-30 *NEW*	Fortaleza, Ceará, Brazil	IX Brazilian Symposium on Geographical Climatology - IX SBCC
Sep.26-Oct.1 *NEW*	Belém, Pará, Brazil	45th Brazilian Congress of Geology
27-30	Jackson Hole WY, USA	Remote Sensing & Hydrology Symposium 2010
28-29	Plymouth MI, USA	PLM Road Map 2010
Sep.28-Oct.1	Orlando FL, USA	GIS-Pro 2010: URISA/48th Annual URISA Conference & Exposition
Sep.29-Oct.1	Merida, Venezuela	1st National Congress on Geographic Information Systems GIS (ConaSIG) E-mail: aseciam@gmail.com or aseciam@ula.ve
Sep.29-Oct.3	Savannah GA, USA	National Conference on Geography Education
Sep.30-Oct.1	Regina SK, Canada	ESRI Regional User Conference
Sep.30-Oct.2	Tempe AZ, USA	International Associations for the Study of the Commons USA Regional Meeting

OCTOBER 2010

3	Santiago, Chile	GEOSS Workshop XXXIX – Forest and Bio-energy
4-8	Santiago, Chile	Latin American Remote Sensing Week
4-6	Atlantic City NJ, USA	MAC URISA 2010 Conference
NEW 5-7 *NEW*	Rio Claro, São Paulo, Brazil	I Brazilian Congress of the Space Organization and X Graduate Geography Seminar UNESP Rio Claro
6-7	Toronto ON, Canada	ESRI Regional User Conference
6-8	Binghamton NY, USA	Race, Ethnicity and Place Conference
8-12	Guanajuato, Mexico	14th SELPER International Symposium
8-12 *NEW*	Buenos Aires, Argentina	International Congress on Bicentenary Geography, 71st Geography Week
10-14 *NEW*	Florianópolis, SC, Brazil	9th Congress of Multipurpose Technical Cadastre and Territorial Management COBRAC 2010
13-15 *NEW*	Frankfort KY, USA	2010 Kentucky GIS Conference
16 *NEW*	Cáceres MT, Brazil	3rd Symposium on Wetland Geotechnologies Further information: http://www.geopantanal.cnptia.embrapa.br/2010/
17-20	Dearborn MI, EUA	2010 ESRI Electric & Gas User Group Conference
18-20	Denver CO, USA	2010 ESRI Health GIS Conference
18-22	Singapore, Singapore	GSDI 12 World Conference 2010: Realizing Spatially Enabled Societies
18-22	Orlando FL, USA	E-Learn 2010
19-20	Ottawa, Canada	ESRI Regional User Conference
19-21	Curitiba Paraná, Brazil	IX Updated Seminar on Remote Sensing and Geographic Information Systems Applied to Forestry Engineer
19-23 *NEW*	San Francisco CA, USA	Oracle OpenWorld
20-21	Naperville IL, USA	ILGISA Fall Conference
20-22	La Cumbre, Cordoba, Argentina	First International Conference on Advances in New Technologies, Interactive Interfaces and Communicability (ADNTIIC 2010)
20-22	Santiago, Chile	IAOS/Scorus Conference on Official Statistics and the Environment: Approaches, Issues, Challenges and Linkages
20-23 *NEW*	Fort Worth TX, USA	Applied Geography Conference

Global Spatial Data Infrastructure Latin America and the Caribbean Newsletter

24-26	Saratoga Springs NY, EUA	2010 New York State Geographic Information Systems (GIS) Conference
24-27	Lake Buena Vista FL, USA	Pictometry FutureView 2010
NEW 25-26	Montevideo, Uruguay	First Uruguayan Congress on Spatial Data Infrastructure: Contributing to Development of a Regional Network
25-28	Nashville TN, USA	GEOINT Symposium 2010
26-27	Fredericton NB, Canada	ESRI Regional User Conference

NOVEMBER 2010

1-4	Nashville TN, EUA	GEOINT 2010
NEW 1-5	Vancouver BC, Canada	4th International Workshop on Semantic and Conceptual Issues in GIS (SeCoGIS 2010)
2-3	Vancouver BC, Canada	ESRI Regional User Conference
2-5	San Jose CA, USA	ACM SIG SPATIAL GIS 2010
4	Oakville, Ontario, Canada	GITA Ontario Chapter Fall Forum 2010
4-5	Denver CO, USA	MAPublisher Training
NEW 8-10	Las Vegas NV, USA	Trimble Dimensions 2010
8-12	Guanajuato, Mexico	XIV International SELPER Symposium "Observation & Monitoring of the Earth Related to Climate Change" (An ISPRS Regional Conference) E-mail: silvia.casas757@gmail.com
8-12	Lima, Perú	Joint Meeting of PAIGH Board Council, Americas Geocentrical Reference System (in Spanish SIRGAS) and School of "References System" (in Spanish IAG-SIRGAS)
NEW 15-21	Bahía Blanca, Argentina	1st Working days on new Southern Argentina Geographic Information Technologies Further information: Jornadasinfogeo@gmail.com
15-19	Orlando FL, USA	AutoCarto 2010
15-19	Orlando FL, USA	ASPRS/CaGIS 2010 Fall Specialty Conference
16-17	Huntsville AL, USA	Rocket City Geospatial 2010
16-18	Orlando FL, USA	Commission IV Symposium "Geodatabases & Digital Mapping" / Marguerite Madden (President Commission IV) / mmadden@uga.edu
NEW 16-19	Orlando FL, USA	ISPRS Commission IV - Geodatabases and Digital Mapping
16-19	Havana, Cuba	IV Conference of the Latin American Population Association "Cultural conditions and transformations, economic factors, and demographic trends in Latin America"
NEW 17-18	Tallahassee FL, USA	Seven Hills Regional User Group for GIS (SHRUG)
17-18	St. John's NL, Canada	ESRI Regional User Conference
22-26	San Miguel de Tucumán, Argentina	First Latin-American Congress (IV Argentinean) on Biodiversity and Conservation 2010 , Information: info@biodiversidad.com.ar
Nov. 30-Dec 2	Las Vegas NV, USA	Autodesk University 2010 Conference and Exhibition
Nov.30-Dec.3	Port of Spain, Trinidad	URISA's 5th Caribbean GIS Conference

[\(Back to Top\)](#)

Global Spatial Data Infrastructure Latin America and the Caribbean Newsletter

Please mention SDI-LAC as source of information in any correspondence you may have on items in this issue

To subscribe to SDI-LAC, please do so online at:
<http://www.gsdi.org/newslist/gsdsubscribe.asp>
Nancy Aguirre, PAIGH, Editor cnaguirre@ipgh.org
Global Spatial Data Infrastructure Association,
<http://www.gsdi.org>

DISCLAIMER:
GSDI, PAIGH and the Editor will not be held liable for any errors, mistakes, misprints or incorrect information. Copyright © 2010. All rights reserved.